

# Installation Guide for Pcounter Upgrade

## 2.92c/3.04c

Pull Queue Update

December 2021

## Contents

1. Overview .....	3
2. Installation over a previous version of Pcounter .....	3
3. Installation with Pcounter Embedded .....	3
4. How to designate a pull queue.....	4
5. Using a Pull Queue with Pcounter Embedded or Pcounter Station.....	5
6. Using a Pull Queue with Pcounter Popup client.....	5
7. Using a Pull Queue with a standard printer to print right away, no pause/popup .....	6

## 1. Overview

- Pull Queues do not require Pcounter Ports and can be set up with v4 drivers.
- They are used as intermediary queues through which jobs can pass to other queues with Pcounter ports.
- The Pcounter LPD server is now required to be running to accommodate v4/XPS spooled jobs being “despooled” to v3 queues. This is now automatic in the Pcounter server configuration.
- Pull Queues with v3 drivers are always kept paused so that jobs cannot begin printing.
- Pull Queues with v4 drivers need to be set up with a Standard TCP/IP Port with protocol LPR, host 127.0.0.1, queue name
- PcountMoveJob. Pcontrol will offer to configure/create the port during configuration, or it can be done manually via the printer properties.
- Pull queues can be set with the same configuration options as Pcounter Ports.
- The print queues associated with the printers should continue to have v3 drivers and Pcounter Ports.

## 2. Installation over a previous version of Pcounter

Unzip (including subdirectories) over the Pcounter program directory (typically c:\program files (x86)\pcounter for nt).

In Pcontrol, update the Pcounter Printer Control Service and Ports.

(The Pcounter Data Server can remain the same for now.)

## 3. Installation with Pcounter Embedded

Stop the Pcounter embedded service(s).

(Pcounter 2.x) Copy/replace pcounterNTacct.dll from the zip file in \windows\syswow64.

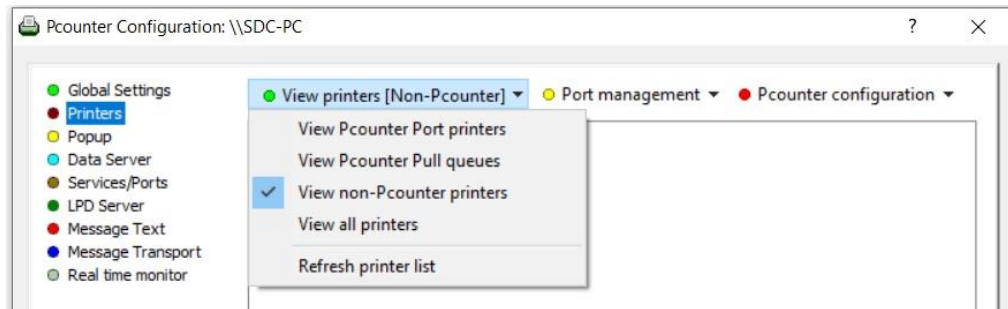
(Pcounter 3.x) Copy/replace the pcounterAPI.dll from the zip file in \windows\syswow64.

Start the Pcounter embedded service(s).

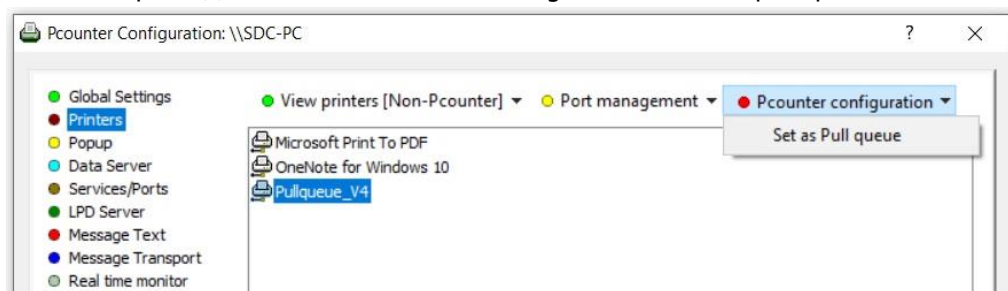
## 4. How to designate a pull queue

To designate a pull queue, open Pcontrol > Configure Pcounter Server > Printers tab

View non-Pcounter printers



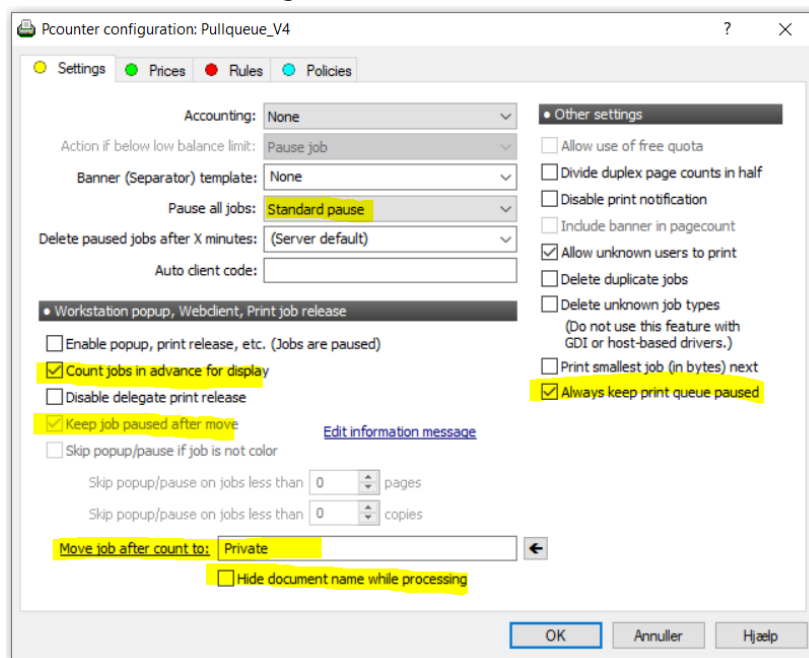
Select the queue(s) and choose Pcounter Configuration > Set as pull queue



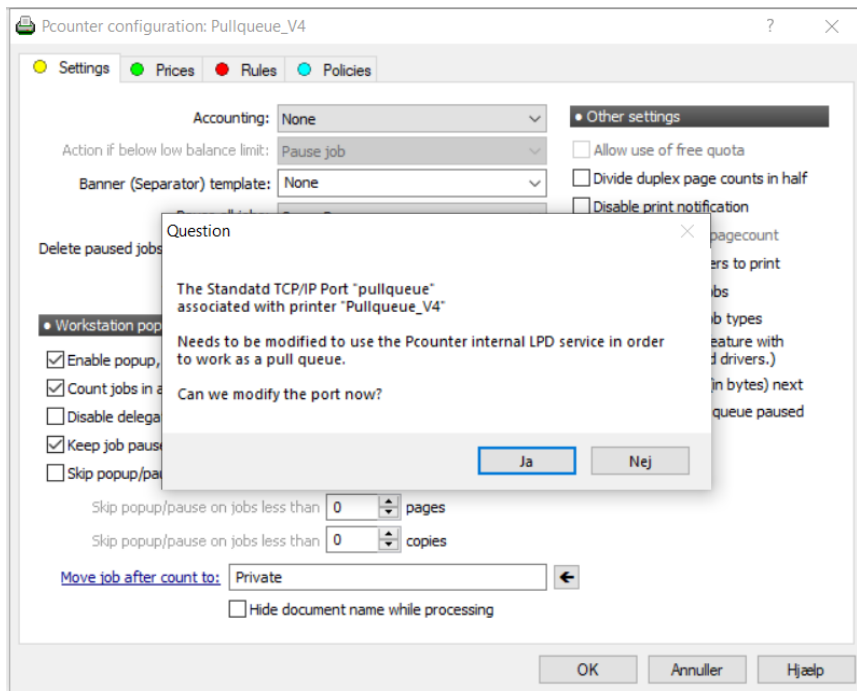
Once this step is complete, restart the Pcounter Printer Control service

Select "View Pcounter Pull queues" and select the new queue.

The edit Pcounter Configuration:



Select: Standard pause, Count job in advance for display, Keep the job paused after the move, Always keep print queue paused and if required "Move job after count to:"



Press “yes” and you will be asked to modify the port to use the internal LPD service.

## 5. Using a Pull Queue with Pcounter Embedded or Pcounter Station

Pull queues are already widely used with these applications. Jobs are collected in the Pull queues and moved by user request to the queue associated with the printer (which has a Pcounter port) in the print release application. All that is needed is to specify a new Pcounter server Pull Queue as a pull queue in the Pcounter embedded configuration utility.

If it is necessary to use a “hidden” pull queue so that normal users cannot see each other’s jobs, it is possible to specify “Move job after count/popup” so that jobs can be moved to that secondary pull queue. Make sure that “Keep job paused after move.” is selected.

Otherwise, do not specify “Move job after count/popup” or any rules which can move jobs to other printers.

## 6. Using a Pull Queue with Pcounter Popup client

This scenario requires two queues, one pull queue and one printing queue.

The Pcounter pull queue should be set up with “Enable Popup/Super Pause/Count jobs in advance” and “Move job after popup” to the printing queue, with a v3 driver and Pcounter Port.

The printing queue should not have “Enable Popup/Super Pause/Count jobs in advance” so that the jobs can print right away after being moved there.

## 7. Using a Pull Queue with a standard printer to print immediately, no pause/popup

This scenario requires two queues, one pull queue and one printing queue.

The Pcounter pull queue should be set up with “Enable Popup/Super Pause/Count jobs in advance” and “Move job after count” to the printing queue, which has a v3 driver and Pcounter Port.

Even though the pause is specified in this case, the job will be moved right away to the specified printing queue.

The printing queue should not have “Enable Popup/Super Pause/Count jobs in advance” so that the jobs can print right away after being moved there.